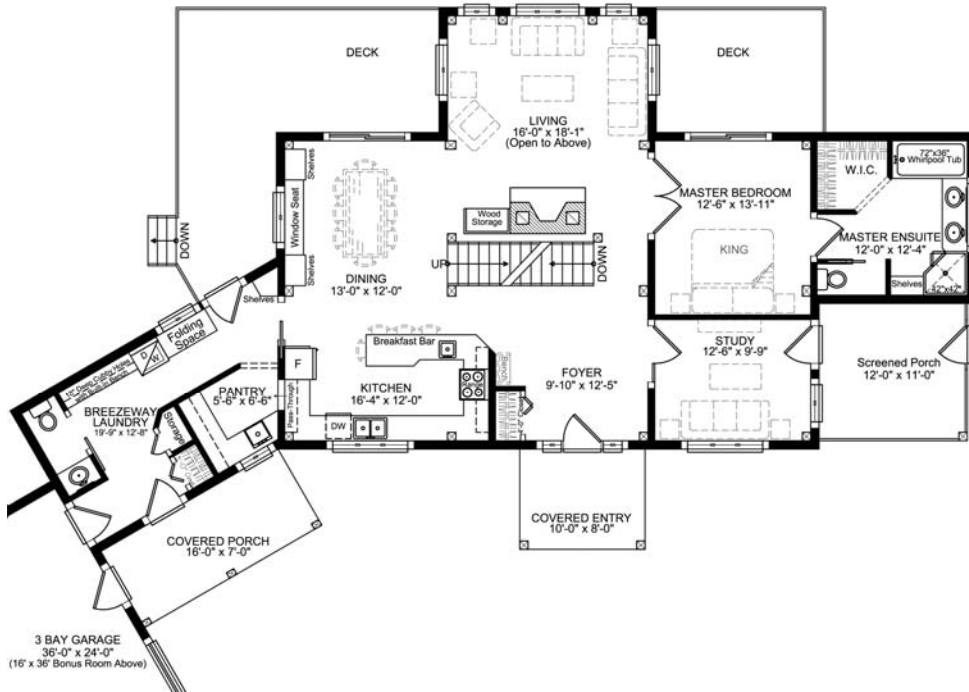


Westwood Raised Cape

2,404 sq. ft.



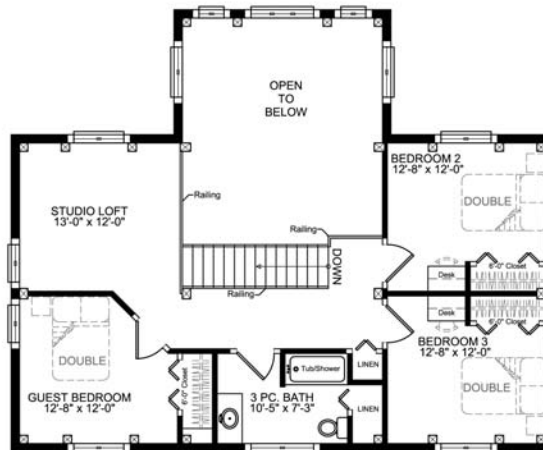
The angled breezeway and garage help create a welcoming and safe courtyard-style entry to this classic timber frame home. The covered entries shelter occupants and guests, and add focal points to the roadside façade.

The main floor Master Suite is conveniently located, and its generous size offers many layout options and living arrangements. Direct access to the screened porch and deck allows private outdoor living and enjoyment of nearby nature.

The large Kitchen has a long peninsula with a breakfast bar to help feed hungry children and to allow close friends to sit nearby when meals are being prepared. The window seat and built-in shelves help make the Dining Room a cozy and quiet space for sit-down meals.

The broad expanse of windows in the Living room allows great views throughout the home, and is the centrepiece of the design. The fireplace helps warm up the whole home and becomes the visual focus at night and during family gatherings.

The view from the top of the stairs is another highlight of this design. The three bedrooms upstairs, along with the open loft area allow both private and shared spaces for the children and occasional guests.



GILLIS & COMPANY TIMBER FRAMES

6240 Summit Street
Halifax, NS B3L 1R7
Canada
1.800.317.8419 or
902.453.2108
www.gillistimberframes.com
mark@gillistimberframes.com

Project Size

First Floor =	1,322 sq. ft.
Second Floor =	840 sq. ft.
Breezeway =	242 sq. ft.
Total =	2,404 sq. ft.
Garage =	864 sq. ft.

Westwood Raised Cape

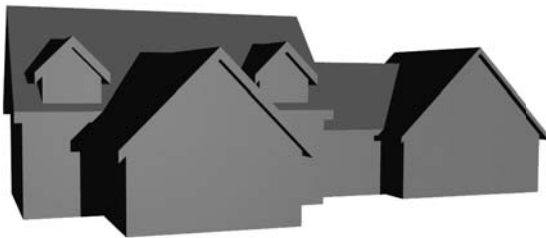
2,404 sq. ft.



Roadside View



Waterside View



GILLIS & COMPANY TIMBER FRAMES

6240 Summit Street
Halifax, NS B3L 1R7
Canada
1.800.317.8419 or
902.453.2108
www.gillistimberframes.com
mark@gillistimberframes.com