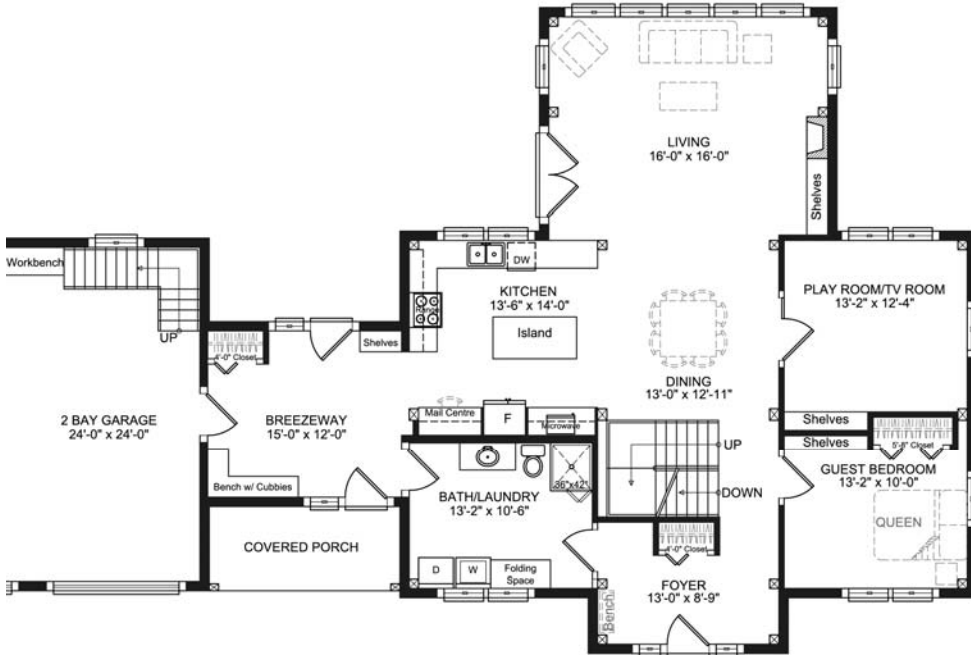


Stratford Raised Cape

2,404 sq. ft.

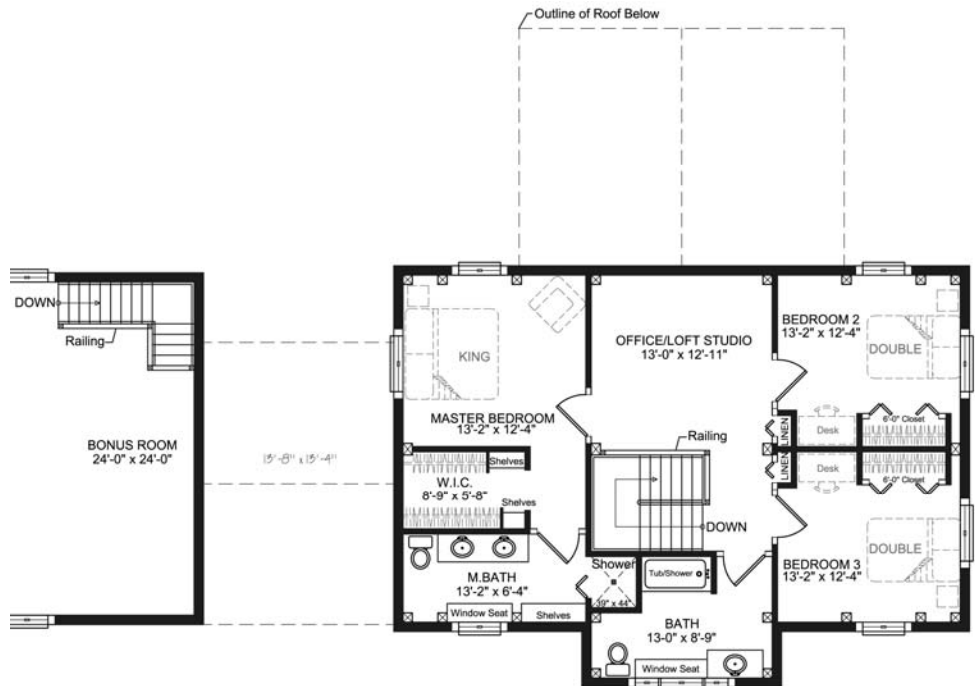


The Covered Entry and large Foyer kindly welcome all family and guests to this stunning storey and a half home, while the fully featured Breezeway is used for the everyday coming and going of a busy family.

The open Kitchen, Dining and Living areas flow into each other, and the private Play Room/TV Room helps keep the open spaces quite and relaxing.

The main floor Guest Bedroom has easy access to the Bath/Laundry room, and can be used as a private getaway space when not needed by visiting family and guests.

The open Office/Loft Studio space overlooks the living room, and shares the beautiful views through the broad Living Room windows. The two Children's Bedrooms share a full bath, while the gorgeous Master Suite is complete with a walk-in closet, private 4-piece bath and has great views from the roadside and waterside dormers.



GILLIS & COMPANY TIMBER FRAMES

6240 Summit Street
Halifax, NS B3L 1R7
Canada
1.800.317.8419 or
902.453.2108
www.gillistimberframes.com
mark@gillistimberframes.com

Project Size	
First Floor =	1,188 sq. ft.
Second Floor =	484 sq. ft.
Total =	2,404 sq. ft.

Stratford Raised Cape

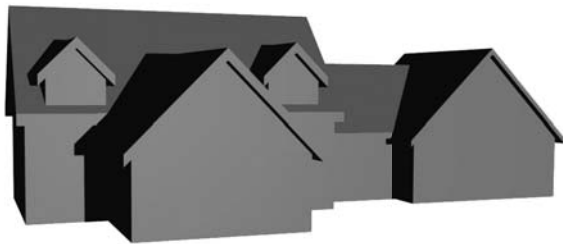
2,404 sq. ft.



Front Elevation



Rear Elevation



GILLIS & COMPANY TIMBER FRAMES

6240 Summit Street
Halifax, NS B3L 1R7
Canada
1.800.317.8419 or
902.453.2108
www.gillistimberframes.com
mark@gillistimberframes.com