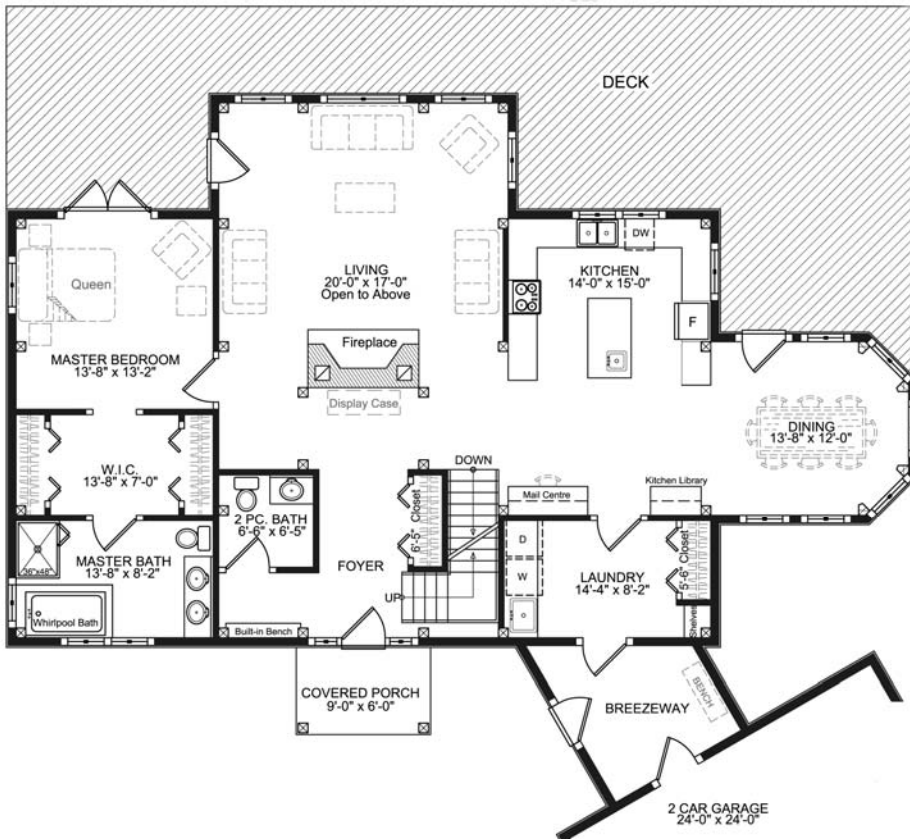


# Sherbrooke Raised Cape

2,870 sq. ft.



The large fireplace in the Living room anchors this spacious home, while the large windows help bathe the seating area in warm sunlight all through the day. A door on the side of the bump out ties the indoor and outdoor spaces, and simplifies outdoor entertaining and living.

The private, main floor Master Suite opens directly on to the deck, and the generous walk-in closet and bath can be arranged to suit any needs.

The Dining Room is wrapped in windows and features a beautiful half-octagon timber frame. A door on the waterside makes outdoor cooking and dining easy, and offers a third access point the rear yard and deck.

The laundry helps make single level living easy, while the separate 2 piece bath is easily accessible to visitors and guests.

Upstairs, the two generous bedrooms with ensuite baths, are flexible enough to accommodate a growing family or spacious enough for long-term guests. The Study/Guest Bedroom has direct access to the shared bath, and opens directly onto the catwalk above the Living Room, with full views of landscape and sun beyond.



**GILLIS & COMPANY TIMBER FRAMES**

6240 Summit Street  
Halifax, NS B3L 1R7  
Canada  
1.800.317.8419 or  
902.453.2108  
www.gillistimberframes.com  
mark@gillistimberframes.com

**Project Size**

First Floor =	1,707 sq. ft.
Second Floor =	1,163 sq. ft.
Total =	2,870 sq. ft.
Breezeway =	96 sq. ft.
Garage =	576 sq. ft.

# Sherbrooke Raised Cape

2,870 sq. ft.



Roadside View



Waterside View



**GILLIS & COMPANY TIMBER FRAMES**

6240 Summit Street  
Halifax, NS B3L 1R7  
Canada  
1.800.317.8419 or  
902.453.2108  
[www.gillistimberframes.com](http://www.gillistimberframes.com)  
[mark@gillistimberframes.com](mailto:mark@gillistimberframes.com)