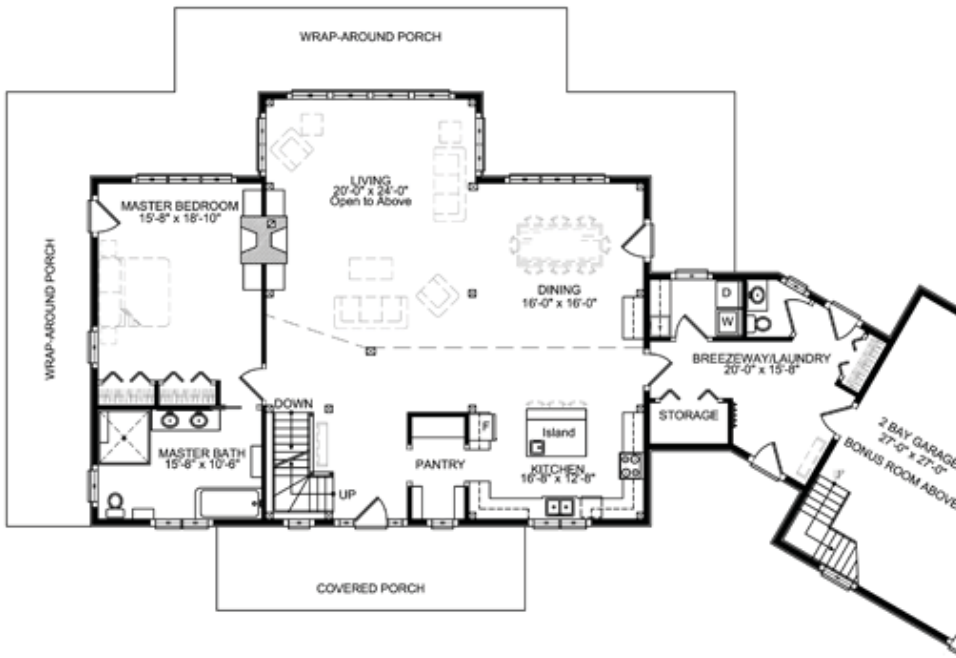


Port Maitland Raised Cape

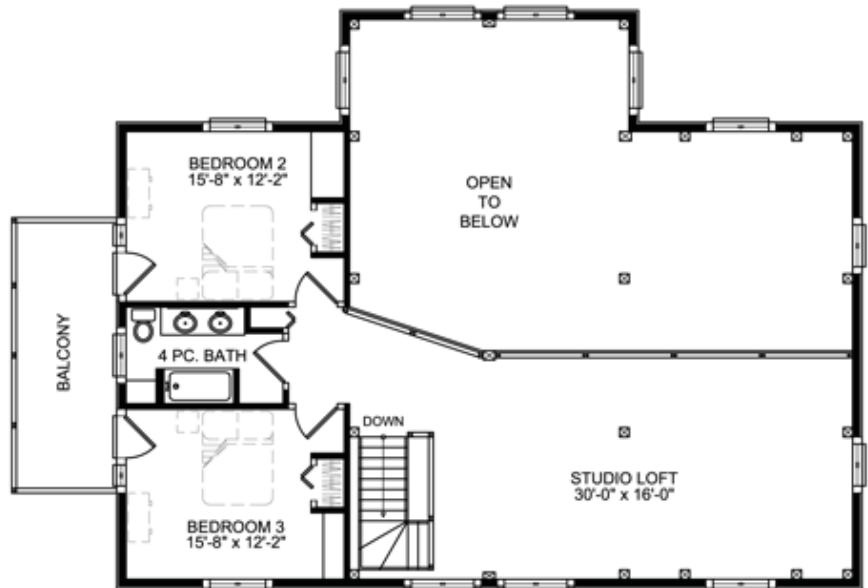
2,940 sq. ft.



This handcrafted timber frame home was designed around our client's desire to have all of the ground floor spaces open onto the wrap-around porch, making outdoor living easy.

The spacious ground floor Master Suite also takes advantage of the access to the outdoors and stunning ocean views.

Upstairs, the two generous Bedrooms a shared Bath will accommodate a growi family or occasional guests. The bright and open Studio Loft can easily be converted into an office or fourth Bedroom with Ensuite Bath.



GILLIS & COMPANY TIMBER FRAMES

6240 Summit Street
Halifax, NS B3L 1R7
Canada
1.800.317.8419 or
902.453.2108
www.gillistimberframes.com
mark@gillistimberframes.com

Project Size

First Floor = 1,824 sq. ft.
Second Floor = 1,116 sq. ft.
Total = 2,940 sq. ft.



**GILLIS & COMPANY
TIMBER FRAMES**
Designing and Handcrafting Custom Timber Frame Homes

Port Maitland Raised Cape

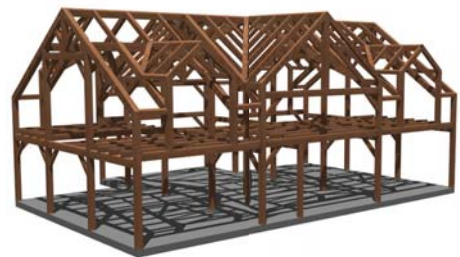
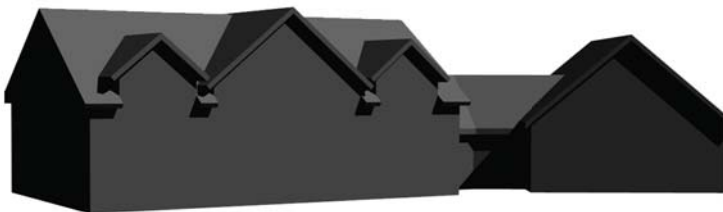
2,940 sq. ft.



Roadside Elevation



Waterside Elevation



GILLIS & COMPANY TIMBER FRAMES

6240 Summit Street
Halifax, NS B3L 1R7
Canada
1.800.317.8419 or
902.453.2108
www.gillistimberframes.com
mark@gillistimberframes.com