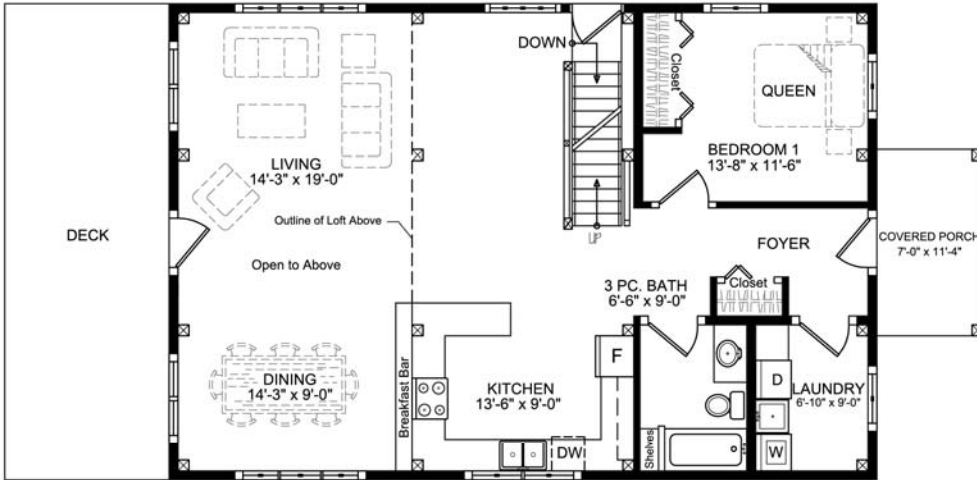


Pembroke Octagonal Tower

1,913 sq. ft.

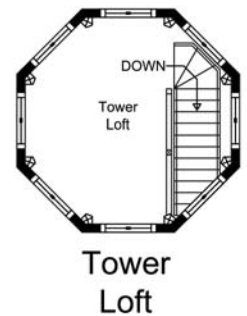
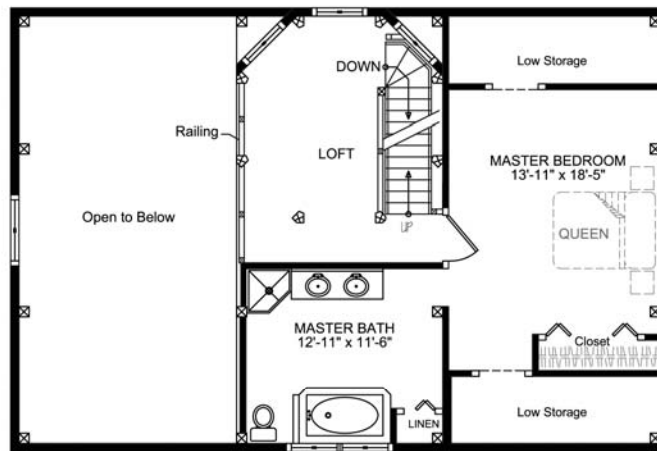


This design provides panoramic views, as it features an octagonal tower with a third floor Loft surrounded with glass. The Living and Dining areas also feature large areas of glass, capturing beautiful views and sunsets.

The main floor public space is open concept throughout, and is completed with a large Bedroom, a 3-Piece Bathroom and full Laundry facilities. The main floor Bedroom can easily be converted into an Office/Den with private access to the outside.

The second floor includes a comfortable Master Bedroom Suite with a full Bath, with ample storage under the eaves. The design can be modified to include two smaller Bedrooms and/or a larger open loft. Additional Bedrooms and living space can be included above the Living and Dining areas.

The third floor Tower Loft creates a private study/meditation area or a perch for bird and nature watching. The tower design can be modified to incorporate a large telescope for unparalleled access to the night sky.



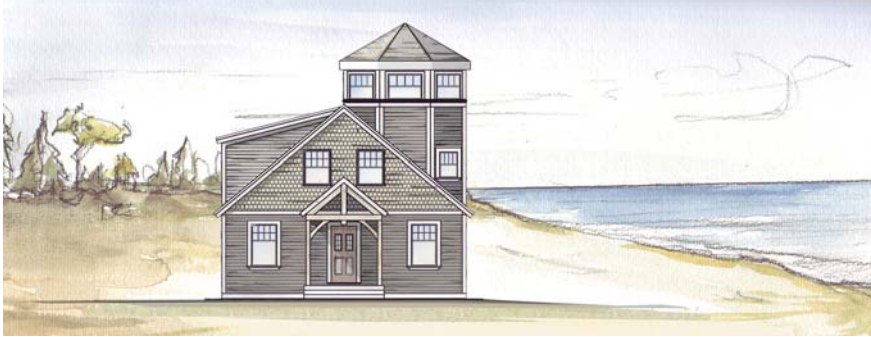
GILLIS & COMPANY TIMBER FRAMES

6240 Summit Street
Halifax, NS B3L 1R7
Canada
1.800.317.8419 or
902.453.2108
www.gillistimberframes.com
mark@gillistimberframes.com

Project Size	
First Floor =	1,176 sq. ft.
Second Floor =	624 sq. ft.
Breezway =	113 sq. ft.
Total =	1,913 sq. ft.

Pembroke Octagonal Tower

1,913 sq. ft.



Roadside View



Waterside View



GILLIS & COMPANY TIMBER FRAMES

6240 Summit Street
Halifax, NS B3L 1R7
Canada
1.800.317.8419 or
902.453.2108
www.gillistimberframes.com
mark@gillistimberframes.com