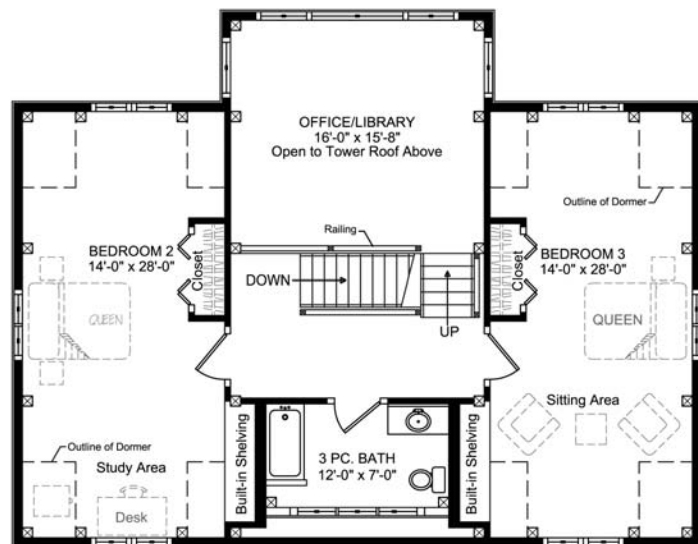


This design neatly combines private and public spaces, and helps capture scenic views with its large areas of glass and generous tower loft space. The main floor features a Master Suite and Laundry facilities, along with a large Kitchen, open to the Dining and Living areas.

The large Foyer area can be used to feature larger works of art or antique collections, and the Master Suite can be converted into a private Office/Den or Media Centre. Optional Garage and Basement areas allow for expanded storage and flexible living spaces.

Upstairs, the two large Bedrooms share a 3-Piece Bathroom, and the upper stairs lead to a large, private Office/Library – perfect for reading, meditating or simply taking in spectacular views. Private balconies can be added to either of the two Bedrooms.



**GILLIS & COMPANY TIMBER FRAMES**

6240 Summit Street  
Halifax, NS B3L 1R7  
Canada  
1.800.317.8419 or  
902.453.2108  
www.gillistimberframes.com  
mark@gillistimberframes.com

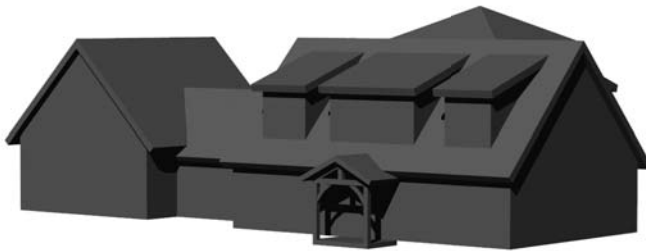
Project Size	
First Floor =	1,440 sq. ft.
Second Floor =	1,125 sq. ft.
Total =	2,565 sq. ft.
Breezeway =	225 sq. ft.
Garage =	624 sq. ft.



Roadside View



Waterside View



**GILLIS & COMPANY TIMBER FRAMES**

6240 Summit Street  
Halifax, NS B3L 1R7  
Canada  
1.800.317.8419 or  
902.453.2108  
[www.gillistimberframes.com](http://www.gillistimberframes.com)  
[mark@gillistimberframes.com](mailto:mark@gillistimberframes.com)